

U9405B-02

Modification Recommended Service Note

Supersedes:
NONE

U9405B - FlexiCore Parallel ICT and FlexiCore FlashStation

Serial Numbers: ALL

Manufacturing ID Number: NONE

The Problem – Handler Control Panel cannot detect Fixture Control Board sensors states

Parts Required:

P/N Description Qty.

NONE

ADMINISTRATIVE INFORMATION

ACTION	<input type="checkbox"/> ON SPECIFIED FAILURE	STANDARDS		
CATEGORY:	<input checked="" type="checkbox"/> AGREEABLE TIME	LABOR:	0.5 Hours	
LOCATION	<input checked="" type="checkbox"/> CUSTOMER INSTALLABLE	SERVICE:	<input type="checkbox"/> RETURN	
CATEGORY:	<input type="checkbox"/> ON-SITE (active On-site contract required)	INVENTORY:	<input type="checkbox"/> SCRAP	
	<input type="checkbox"/> SERVICE CENTER		USED	<input type="checkbox"/> RETURN
	<input type="checkbox"/> CHANNEL PARTNERS		PARTS:	<input type="checkbox"/> SCRAP
				<input type="checkbox"/> SEE TEXT
AVAILABILITY:	PRODUCT'S SUPPORT LIFE	NO CHARGE AVAILABLE UNTIL:	- 13-Aug-2022	
	<input type="checkbox"/> Calibration Required	PRODUCT LINE:	80	
	<input checked="" type="checkbox"/> Calibration NOT Required	AUTHOR:	Kwan Wee Lee	

ADDITIONAL INFORMATION:

Situation:

Due to the cut in of Windows 10 version to 2004 and above on all new FlexiCore systems, the Cypress chip firmware on the Fixture Control Board had been updated from 0404 to 0405 to support the new digital signatures requirements by Win10.

The change causes all versions of Handler Control Panel application to lose communications to the firmware. Handler Control Panel can no longer detect the states of the sensors from the Fixture Control Board. However, certain operations like Initialize still works.



Solution/Action:

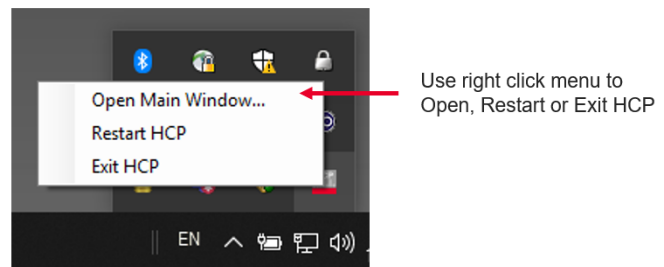
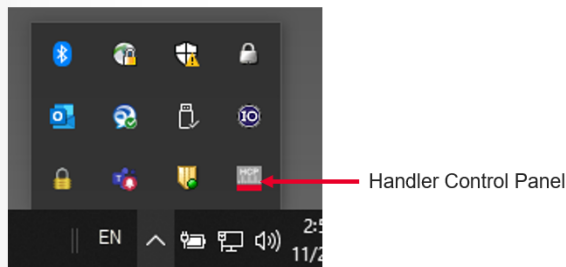
Handler Control Panel version 3.0.4.0 (HCPv3040) has been released to fix the problem. Handler Command version 1.2.8.3 has been released to support the new features of HCPv3040. Send an email request to kwan-wee_lee@keysight.com for the download links.

IMPORTANT NOTE :

HCPv3040 features a new user interface along with a different use model as compared to the earlier versions. User may need to get themselves familiarized with this new environment. Listed below are two of the major differences in use model of HCP comparing v3040 against v2.0.3.5 and earlier.

Application startup

HCPv3040 starts up into the system tray and does not display its main interface by default. This is to minimize clutter on the windows desktop. User may go to the system tray to bring up the main interface if needed. When terminating HCP, user will need to exit the application from the system tray too. Clicking the “X” icon on the main interface does not terminate the application.



User access blocked

To prevent unauthorized access to the control of the handler, HCPv3040 will startup in Operator mode by default. In this mode, user can only view the states of the sensors and cannot perform any handler operations such as Initialize or Conveyor Width adjustments.

The only way to unlock HCP into Engineer mode is via a command to the HCP SCPI server. To do this, user just need to launch the Handler Command application in Administrator mode and the application will automatically send the command to set HCP into Engineer mode. User can then toggle between Operator and Engineer mode from the Handler Command interface.

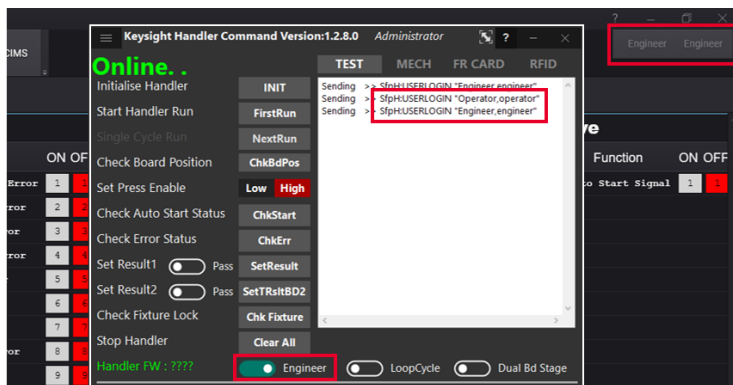
Engr/Opr access control

HCP starts into Operator access

Requires `USERLOGIN cmd` to change access level

Username can be customised to any name

Supports only “engineer” and “operator” levels.



Users are recommended to make use of the Handler Command application to perform any handler operations such as Initialization and Conveyor Width adjustments. The application also provides a range of other actions and features which will help in system setup or troubleshooting. User can access the documentation for Handler Command by clicking the “?” icon on its interface.

Revision History:

Date	Service Note Revision	Author	Reason for Change
13 Aug 2021	01	Kwan Wee Lee	As Published