

SJ50-17

S E R V I C E N O T E

Supersedes: NONE

AOI SJ50 Agilent Medalist Series

Serial Numbers:

N5065C - SG41501110 to SG41501162

N5065D - SG51500072 to SG51500138

N5054A, N5054D- SG50300000 to SG50300016

Other systems may be affected if Kollmorgen drives have been replaced

Problem Statement:

A high failure rate has been identified in some kollmorgen amplifiers. Failure of a Kollmorgen Drive renders the system inoperable until the drive is replaced.

This note recommends replacement of at-risk units and describes how to identify and replace the affected kollmorgen amplifiers.

To Be Performed By: Agilent-Qualified Personnel or Customer

Parts Required:

P/N	Description	Qty.
5186-4621	Kollmorgen Amplidrive	1 per affected drive [SJ – 2 Units per machine]

ADMINISTRATIVE INFORMATION

SERVICE NOTE CLASSIFICATION:			
MODIFICATION RECOMMENDED			
ACTION CATEGORY:	X IMMEDIATELY <input type="checkbox"/> ON SPECIFIED FAILURE <input type="checkbox"/> AGREEABLE TIME	STANDARDS	LABOR: 1.0 Hours
LOCATION CATEGORY:	X CUSTOMER INSTALLABLE <input type="checkbox"/> ON-SITE <input type="checkbox"/> SERVICE CENTER	SERVICE INVENTORY: <input type="checkbox"/> RETURN <input type="checkbox"/> SCRAP <input checked="" type="checkbox"/> SEE TEXT	USED PARTS: <input type="checkbox"/> RETURN <input type="checkbox"/> SCRAP <input checked="" type="checkbox"/> SEE TEXT
AVAILABILITY:	PRODUCT'S SUPPORT LIFE	NO CHARGE AVAILABLE UNTIL: MAY 2009	
AUTHOR:	ALAGESAN AYARU	PRODUCT LINE: 80	
ADDITIONAL INFORMATION:			

© AGILENT TECHNOLOGIES, INC. 2008
PRINTED IN U.S.A.

April 24, 2008

Rev. 14



Solution/ Corrective Action:

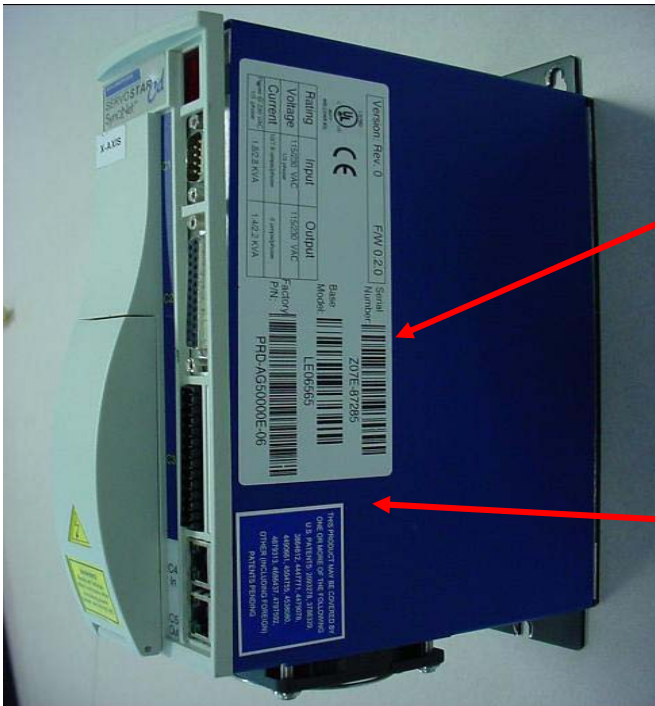
Check for affected drives and replace any affected drives

How to identify if a drive is affected

Read the serial number from the label on the side of the drive.

If the serial number begins with Z06 J, Z06K, Z06L or Z07A – Z07K the drive may be affected. Look for a small label such as shown below.

- If no label is found, the drive should be replaced.
- If the small label does exist, the drive has already been reconditioned so no further action is needed on this drive.



Serial Number

**Affected drives begin:-
Z06J, Z06K, Z06L,
Z07A, Z07B, Z07C
Z07D, Z07E, Z07F
Z07G, Z07H, Z07J
Or Z07K**

**If Small Label was fitted
(WI4907-1), this would
indicate that the drive has
already been reconditioned -
so no need to replace drive**

Example of reconditioned drive – this has old serial number, but also has rework label (WI4907-1) as shown on the bottom right corner



General Information How to identify Kollmorgen drive:

CD SynqNet Serial Number format:

The serial number of the CD SynqNet drives consists of a date code and the drive's serial number in the following format:

ZYYM-XXXXX

Where:

Z – Fixed prefix

YY – two digits of the manufacturing year

For example: 06 represent 2006

M – One letter that represents the manufacturing month as follows:

A January

B February

C March

D April

E May

F June

G July

H August

J September

K October

L November

M December

XXXXX – 5 digits serial number of the drive.

For example:

The following serial number:

Z06E-68309

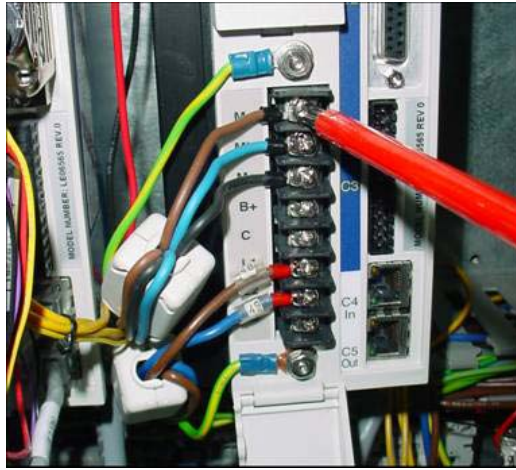
Belongs to a drive that was manufactured at May-2006

Procedure for replacement of a Kollmorgen Drive

1. Shutdown the PC
2. Power Down the Inspection Machine
3. Switch off the power at the rear of the system and open the Control Cabinet.

Warning – Ensure that the system is mains power is completely removed from the AOI machine before changing the kollmorgen drive.

4. Unplug all connectors from the front of the Kollmorgen Drive (C2, C3, C4, C5)
5. Unplug +24V connector from the top of the drive.
6. Open the cover on the Kollmorgen Drive to expose the 230V connections and disconnect these from the drive.



7. Using an 8mm socket, loosen the 3 bolts mounting the drive to the backplane (2 above, 1 below), and remove the Kollmorgen Drive
8. Fit the replacement drive and tighten the mounting bolts
9. Connect the 230V connections.

<i>Terminal</i>	<i>Wire</i>	<i>Cable</i>
Ground (top)	Green and Yellow	Motor Coil
Ma	Brown	
Mb	Blue	
Mc	Black	Supply
L1	Brown	
L2	Bluw	
Ground (Bottom)	Green and Yellow	

10. Plug in and secure the connectors removed previously (C2, C3, C4, C5, and +24V))

**Notes - Take care to ensure correct orientation of plug C3
- C5 is only used if there is another drive fitted to the right of the drive being replaced.**

11. Close the Control Cabinet and Power up the System
12. Clear E-stops and Start up GUI.

A returns Kit should have been provided along with any new drives. Use this to send any removed drives back to Agilent for repair or reconditioning. Please indicate whether the drive was functioning when removed from the system. Inform Agilent of the serial number of the removed drive and the replacement drive.

Setup Tools:

- Small flat blade screwdriver - For unscrewing connectors
- Cross Head Screwdriver (Phillips No2) - For releasing 230V connections
- 8mm Socket - For removing Earth terminal and drive mounting bolts

END of DOCUMENT