

N1914A-12

Modification Recommended Service Note

Supersedes:
NONE

N1914A EPM Series Dual Channel Power Meter

Serial Numbers: MY62290004 - MY62390016, SG62370002 - SG62370005

The Problem – Meter Display Brightness Intensity Control Malfunction

Parts Required:

P/N	Description	Qty.
0950-5724	Converter DC-DC LED module driver 60mA 2 strings panel mount	1

ADMINISTRATIVE INFORMATION

ACTION	x ON SPECIFIED FAILURE	STANDARDS	
CATEGORY:	<input type="checkbox"/> AGREEABLE TIME	LABOR:	1.5 Hours
LOCATION	x SERVICE CENTER	SERVICE:	<input type="checkbox"/> RETURN
CATEGORY:	<input type="checkbox"/> ON-SITE (active On-site contract required)	INVENTORY:	<input type="checkbox"/> SCRAP
	<input type="checkbox"/> CHANNEL PARTNERS		<input type="checkbox"/> SEE TEXT
USED	<input type="checkbox"/> RETURN	PARTS:	<input checked="" type="checkbox"/> SCRAP
			<input type="checkbox"/> SEE TEXT
AVAILABILITY:	PRODUCT'S SUPPORT LIFE	NO CHARGE AVAILABLE UNTIL:	9 November 2025
	x Calibration Required	PRODUCT LINE:	WN
	<input type="checkbox"/> Calibration NOT Required	AUTHOR:	CKN

ADDITIONAL INFORMATION:

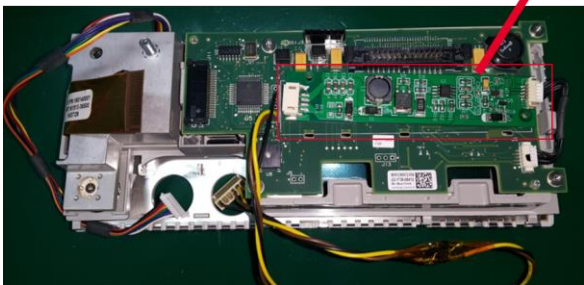
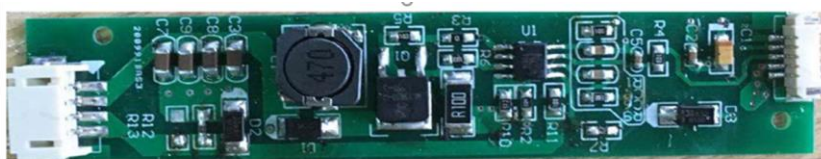
Situation:

Unit with the serial number stated above is built with LCD backlight driver (0960-3600), and this result in failure to adjust the meter display brightness.

Solution/Action:

Verify the meter display brightness by access the brightness feature. Press **System, 1 of 2** and select **Service**. In the **Service** menu, press **1 of 2** and select **Backlight**. Press **Brightness + / Brightness -** to increase / decrease the backlight's brightness. If failed to adjust the brightness, refer to the service guide and replace the LCD backlight driver 0960-3600 with 0950-5724.

0960-3600 and its location:



0950-5724:



Revision History:

Date	Service Note Revision	Author	Reason for Change
08 Nov 2022	01	CKN	As Published