

E8663B-03**S E R V I C E N O T E**Supersedes:
None**E8663B Analog Signal Generator****Serial Numbers:** [0000A00000 / 9999Z99999]**Instruments with option HAR failing self-test 704****To Be Performed By:** Agilent-Qualified Personnel or Customer**Parts Required:** None**ADMINISTRATIVE INFORMATION**

| | | |
|-------------------------------------|---|--|
| SERVICE NOTE CLASSIFICATION: | | |
| MODIFICATION AVAILABLE | | |
| ACTION CATEGORY: | AGREEABLE TIME | x PERFORMANCE ENHANCEMENT [] SERVICE / RELIABILITY ENHANCEMENT |
| LOCATION CATEGORY: | x CUSTOMER INSTALLABLE [] ON-SITE x SERVICE CENTER | AVAILABILITY: EOS |
| AUTHOR: DMc PRODUCT LINE: PL15 | | |
| ADDITIONAL INFORMATION: | | |

© AGILENT TECHNOLOGIES, INC. 2007
PRINTED IN U.S.A.

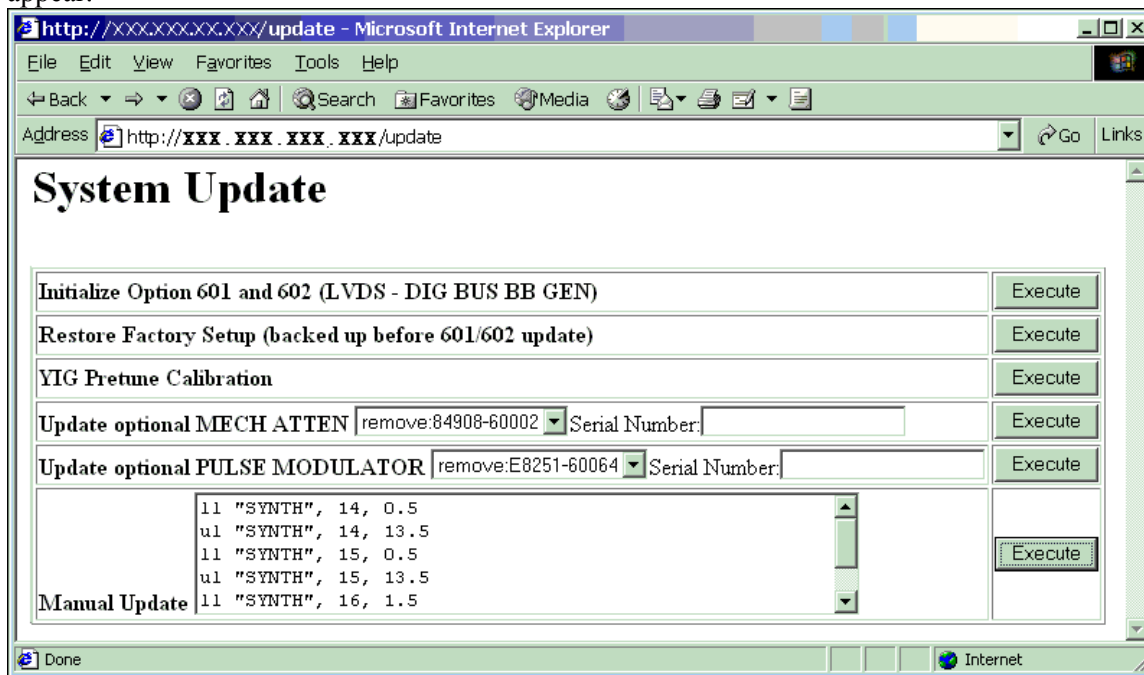
August 30, 2007

Situation:

Instruments with HAR need self-test 704 limits modified. The replacement A6 FracN board part number is shipped with self-test test limits designed for the standard instrument. But because of a change in cable lengths instruments with option HAR can cause good assemblies to fail self-test 704. So after replacing the A6 FracN in instruments with option HAR, the limits need to be modified.

Solution/Action:

1. For instruments with option HAR, when the A6 FracN board is replaced or if you are experiencing self-test failure 704, verify the self-test limits by pressing : Utility, Instrument Information/Help Mode, Self Test, and View Test Info.
2. Using the RPG or up and down arrow keys and scroll to self-test 704. Press: Run Highlighted Test.
3. When self-test is complete press: View Details. The lower and upper limits for the following tests should be:
 - a. 1-1.55 GHz lower = 0.5 upper = 13.5
 - b. 1.55-2.4 GHz; lower = 0.5; upper 13.5
4. If the self-test limits are correct continue to troubleshoot the problem using the troubleshooting procedure.
5. If the self-test limits are not correct, verify the instrument had firmware is C.04.71 or later and if not update to the latest version of firmware.
6. Connect the instrument to the LAN, cycle power and press: Utility, GPIB/RS-232 LAN, and LAN Setup and record the IP address.
7. Open a browser window and type in the instrument IP address/update (<http://xxx.xxx.xxx.xxx/update>) and the following screen should appear.



8. Enter the following text into the 'Manual Update' form as shown:

```
ll "SYNTH", 14, 0.5
ul "SYNTH", 14, 13.5
ll "SYNTH", 15, 0.5
ul "SYNTH", 15, 13.5
ll "SYNTH", 16, 1.5
ul "SYNTH", 16, 13.5
ky 53004
```

9. Press the Execute button next to the Manual Update form.

10. When the update is complete another webpage will be displayed with the message 'Operation completed'. To finish, cycle the power on the instrument and verify the limits have been updated using steps 1-3.

Note: If you need to revert to the standard self test limits, repeat step 7 and enter the following information:

```
ll "SYNTH", 14, 1.5
ul "SYNTH", 14, 13.5
ll "SYNTH", 15, 3.0
ul "SYNTH", 15, 13.5
ll "SYNTH", 16, 2.0
ul "SYNTH", 16, 13.5
ky 51873
```