

E5063A-09A

# Information Only Service Note

Supersedes:  
E5063A-09

## E5063A ENA Series Network Analyzer

Serial Numbers: MY54100001 – MY54199999, SG54100001 – SG54199999  
MY54200001 – MY54299999, SG54200001 – SG54299999

Manufacturing ID Number: N/A

**The Situation** – New Touch Panel & Touch Panel Controller Available

### Parts Required:

P/N	Description	Qty.
-----	-------------	------

Refer Solution in Table 1

### ADMINISTRATIVE INFORMATION

<input type="checkbox"/> Calibration Required	PRODUCT LINE: WN
<input checked="" type="checkbox"/> Calibration NOT Required	AUTHOR: BS

ADDITIONAL INFORMATION: E5063A New Touch Panel and Touch Panel Controller Available

### Situation:

Keysight decided to change new Dawar Touch Panel & Touch Panel Controller (TPC) together with the new Firmware on E5063A. The previous generation of Touch Panel & Touch Panel Controller, SSD and so on will still be available for support.

### Solution/Action:

There will be two generations available for E5063A. The parts for both of the generations will be available for support. Please refer to "[The connection for Gunze & Dawar Touch Panel to Controller](#)" for the connection of the touch panel to touch panel controller board.

The compatibility of the parts for each generation is shown as below:

*Table 1 Parts Compatibility for 1<sup>st</sup> and 2<sup>nd</sup> Generation*

E5063A	1 <sup>st</sup> Gen	2 <sup>nd</sup> Gen
Touch Panel Controller	Gunze 0960-2972	Dawar 0960-3063
LCD & Touch Panel Assembly	E5061-60112	E5061-60113
Touch Panel	2090-0981	2090-1114
LCD	2090-1036	
CPU	Kontron-COMe (Tested) E5061-62180	
SSD	E5063-82201	E5063-82202
DSP	E5061-62051	
Front Keyboard	E5061-66652	
Analog for LF	A1 E5063-63011	
Analog for HF	A1 E5063-63011	
FW	A.01.00-A.03.00	A.03.52 or above
SSD Volume label	KA101-KA300	KD353
Serial prefix	MY541/SG541	MY542/SG542

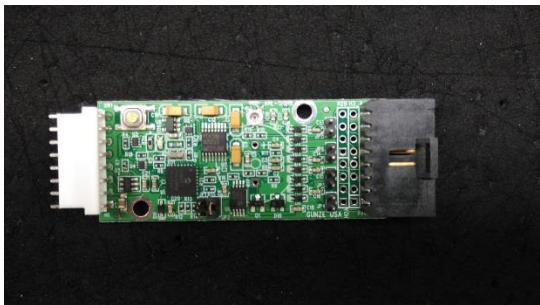



\*Please make sure that the firmware/module is compatible while repair/replace process is on-going

1. When TPC is found to be defective:
  - For defective Gunze TPC, please replace it with Gunze TPC.
  - For defective Dawar TPC, please replace it with Dawar TPC.
  - Please refer to Table 1 for the compatibility.
2. When A1 board is found to be defective:
  - For HF Option & LF Option, please replace with A1 board (E5063-63001).
3. When SSD/Removable SSD is found to be defective:
  - For Gunze TPC (0960-2972), the replacement part number is E5063-82201.
  - For Dawar TPC (0960-3063) please replace with part number E5063-82202.
  - Please refer Table 2 below or Table 1 on the compatibility.

*Table 2 SSD/Removable SSD Compatibility Table*

Original	E5063-82201	E5063-82202
Replace	E5063-82201	E5063-82202

4. Backward compatibility of E5061-60113 to the existing E5061-60112:
  - No, the E5061-60113 is not backward compatible to E5061-60112.
5. Difference between Gunze/Dawar Touch Panel & Touch Panel Controller:

	Gunze	Dawar
Touch Panel Controller		
Touch Panel		

Touch Panel at the Top: Gunze, Touch Panel at the bottom: Dawar



The connection for Gunze & Dawar Touch Panel to Controller:

Dawar:

1. Connect Dawar Touch Panel to Dawar Touch Panel Board/Controller as shown in Figure 1 Figure 5 below. **The cable must be connected to the lower row of the pin.** The hole of the cable from touch panel should be facing inwards, which mean that after connecting to the controller board, the hole of the cable should not be viewable. Please refer to Figure 2, Figure 3 and Figure 4 for the picture of the connection.

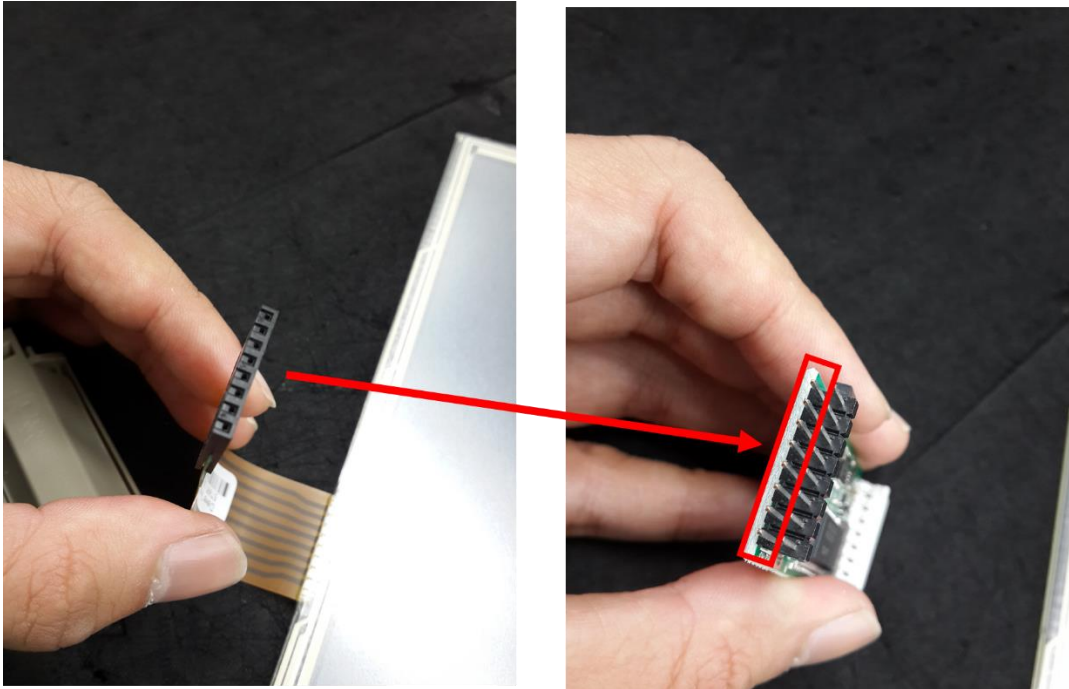


Figure 1 Connection of Dawar Touch Panel & Controller Board



Figure 2 Touch Panel Cable's direction (The hole will be facing inward)



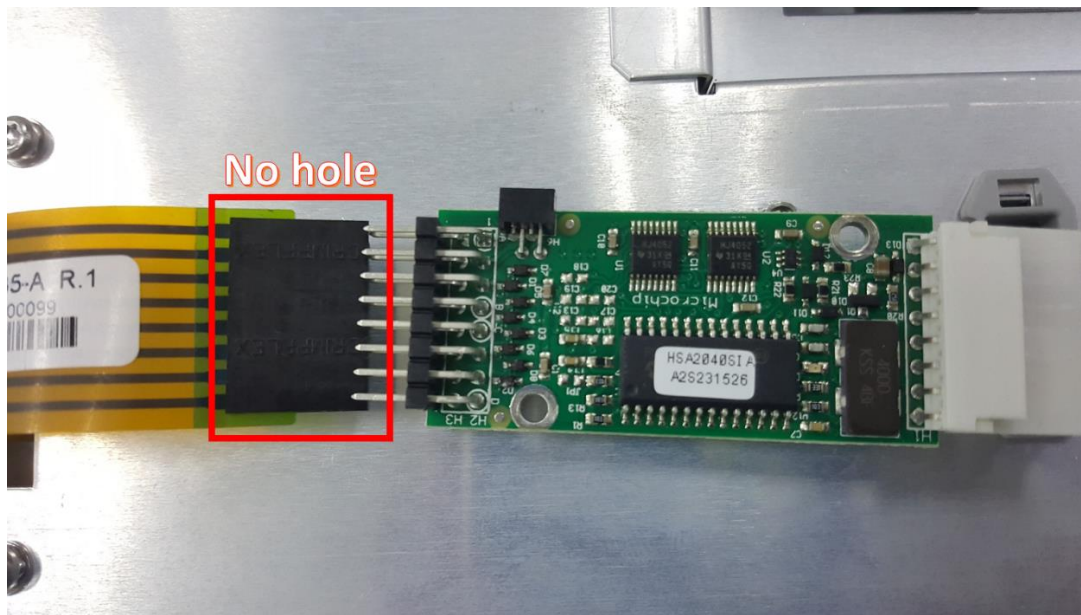


Figure 3 Correct direction of the cable connecting to the controller board

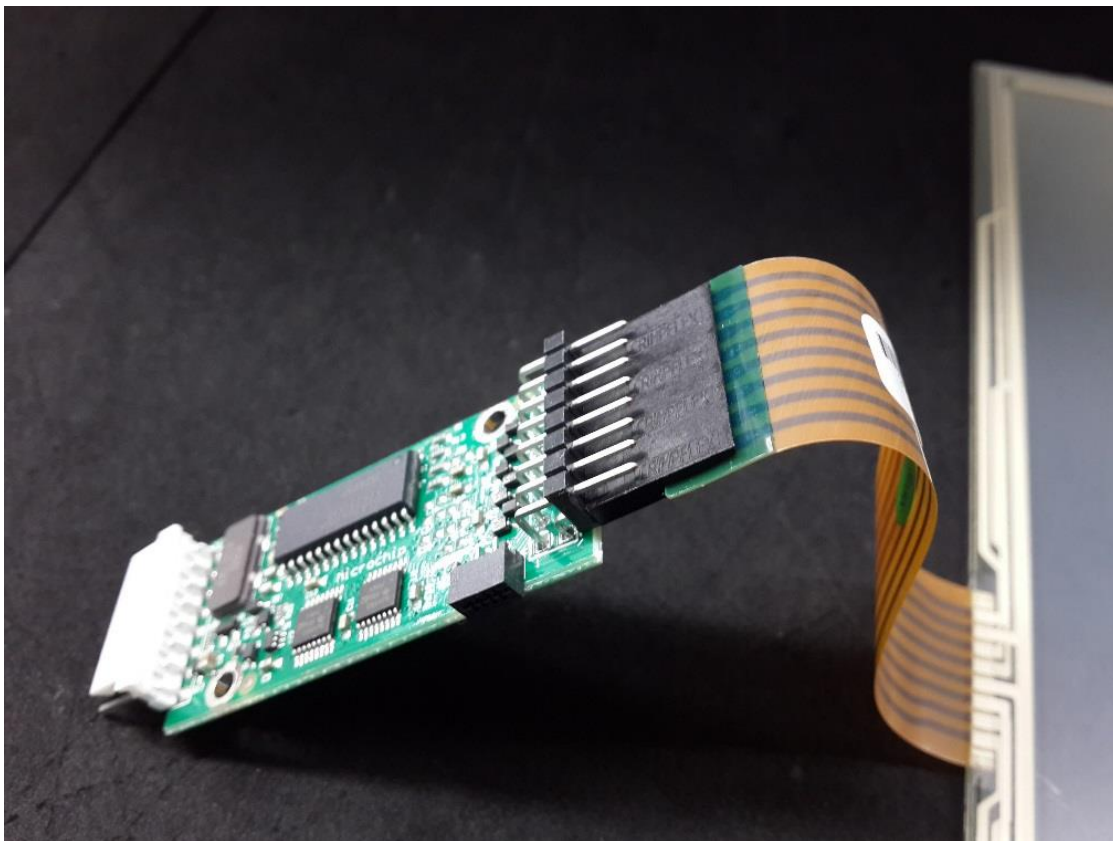
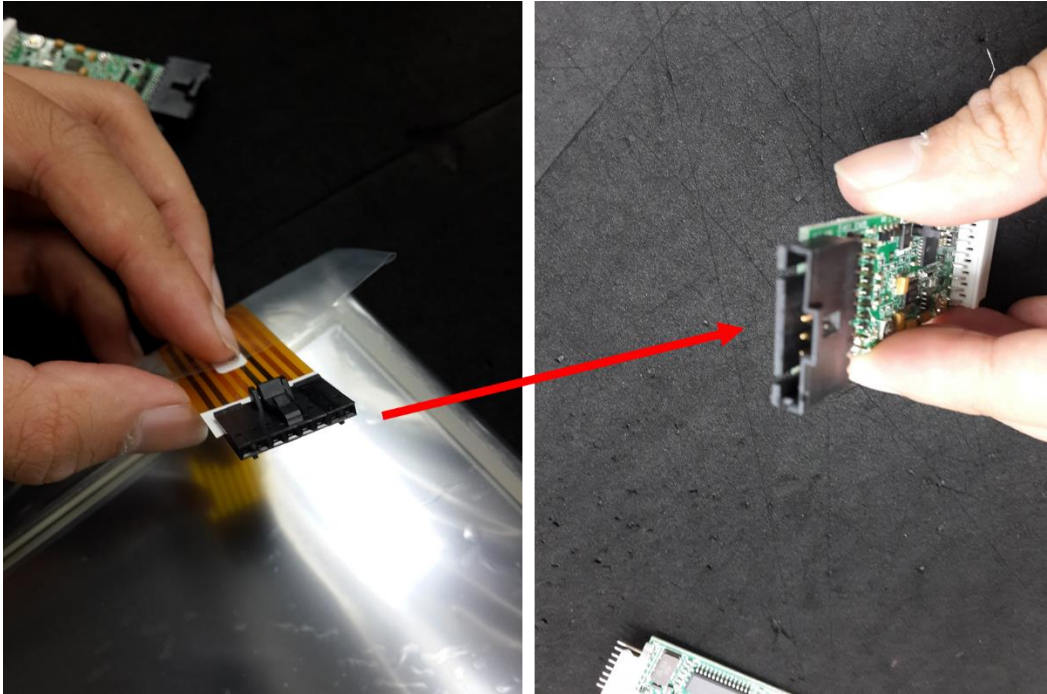


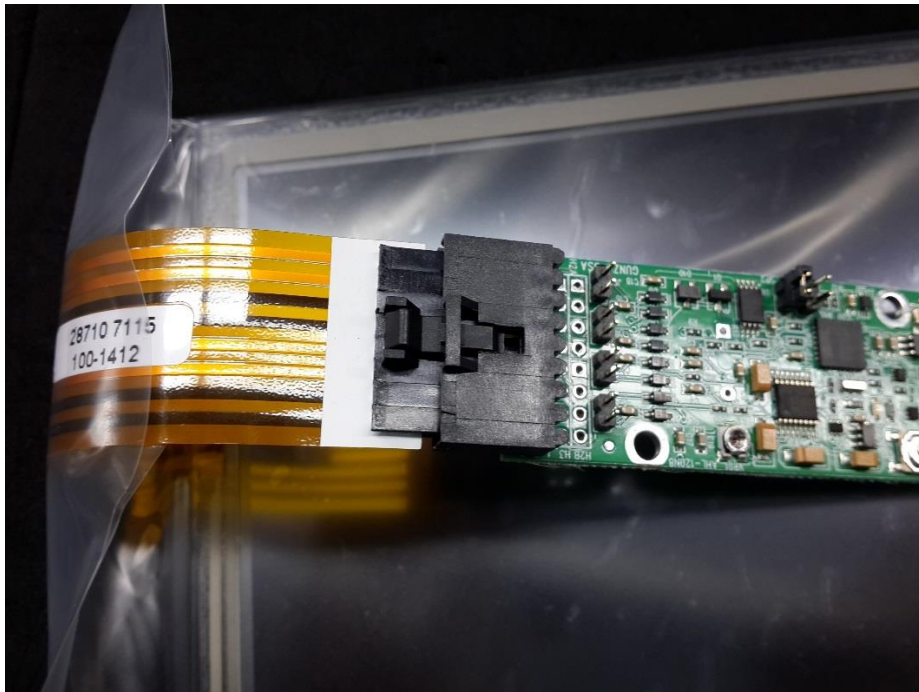
Figure 4 Complete connection of Dawar Touch Panel and Touch Panel Controller Board

Gunze:

1. Connect Gunze Touch Panel to Gunze Touch Panel Board/Controller as shown in Figure 5 below. The Figure 6 shows complete connection of Gunze Touch Panel and Touch Panel Controller Board.



*Figure 5 Connection of Gunze Touch Panel & Controller Board*



*Figure 6 Complete connection of Gunze Touch Panel and Touch Panel Controller Board*

#### Revision History:

Date	Service Note Revision	Author	Reason for Change
10 August 2016	E5063A-09	BS	As Published
16 November 2016	E5063A-09A	BS	Added the connection of touch panel to touch panel controller