

MODIFICATION RECOMMENDED

E5061B-05

S E R V I C E N O T E

Supersedes:
NONE

E5061B Network Analyzer, 5 Hz to 3GHz

Serial Numbers: MY49100100 to MY49299999, SG49100100 to SG49299999

Compatibility issue between Touch Screen Controller and HDD

Parts Required:

P/N	Description	Qty.
E5061-65001	Touch Screen Controller Repair Kit	1

ADMINISTRATIVE INFORMATION

SERVICE NOTE CLASSIFICATION:			
MODIFICATION RECOMMENDED			
ACTION CATEGORY:	X ON SPECIFIED FAILURE <input type="checkbox"/> AGREEABLE TIME	STANDARDS	LABOR: 3.0 Hours
LOCATION CATEGORY:	<input type="checkbox"/> CUSTOMER INSTALLABLE <input type="checkbox"/> ON-SITE X SERVICE CENTER <input type="checkbox"/> CHANNEL PARTNER	SERVICE INVENTORY: <input type="checkbox"/> RETURN X SCRAP <input type="checkbox"/> SEE TEXT	USED PARTS: <input type="checkbox"/> RETURN X SCRAP <input type="checkbox"/> SEE TEXT
AVAILABILITY:	PRODUCT'S SUPPORT LIFE	NO CHARGE AVAILABLE UNTIL: January, 2014	
AUTHOR:	jm	PRODUCT LINE: WN	
ADDITIONAL INFORMATION:			

© AGILENT TECHNOLOGIES, INC. 2012
PRINTED IN U.S.A.

February 29, 2012

Rev. 19



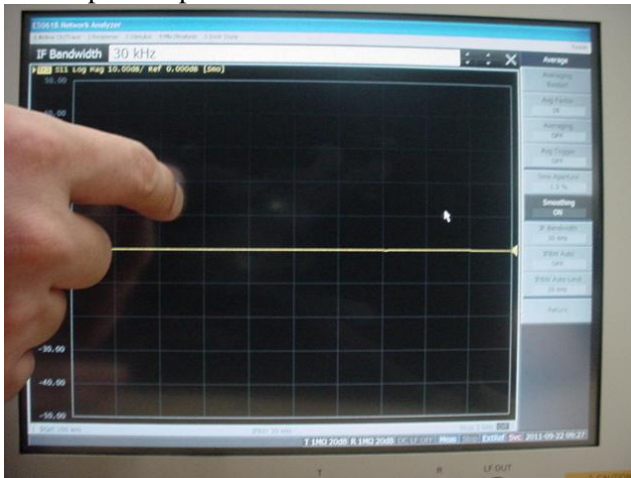
Situation:

There is a compatibility issue between Touch Panel Controller and HDD.

When the HDD needs to be replaced with the E5061-82202 with Serial-Number Range from MY4910xxxx to MY4910xxxx and SG4910xxxx to SG4910xxxx, Touch Panel Controller and its related mechanical items (E5061-65001) also need to be replaced.

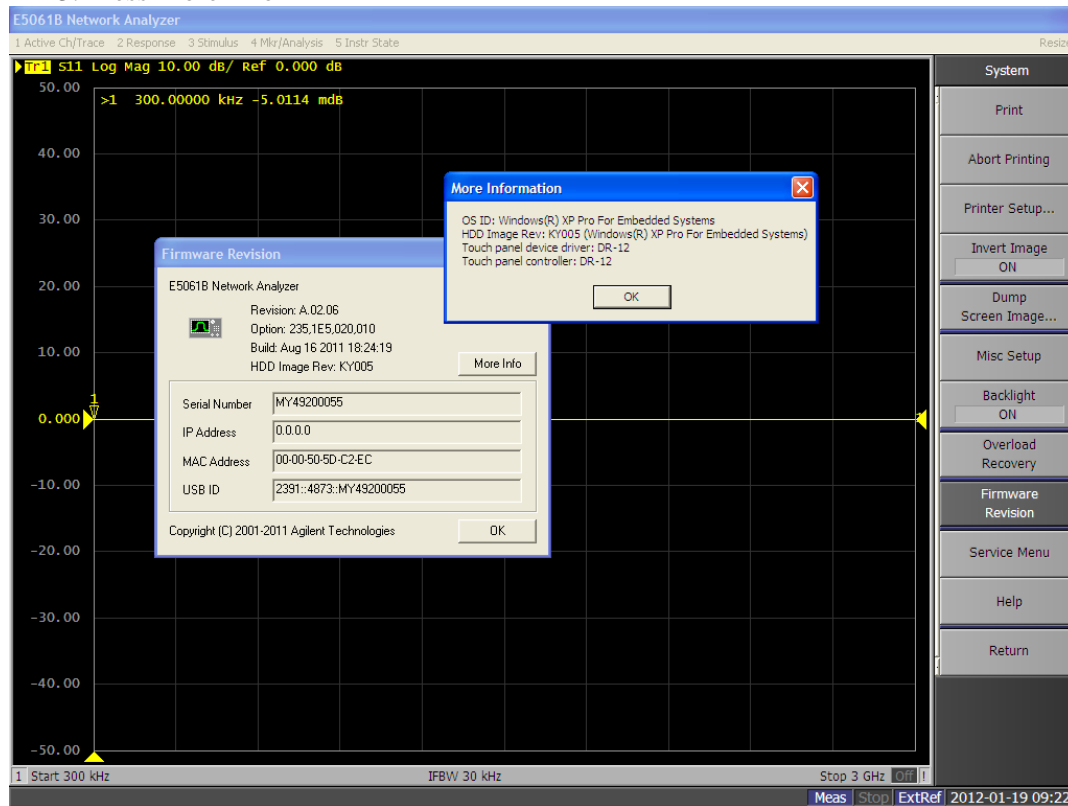
Since this is an Agilent design restriction to change the Touch Panel Controller and its related mechanical items while replacing the HDD, Agilent pays for the Touch Panel Controller and its related mechanical material cost and labors. Agilent does not pay the HDD material cost and labor in this service note.

When there is incompatibility between Touch panel controller and HDD, finger pointed place and the mouse pointer place is different.



When the FW A.02.04 or later is installed, you can check the Touch panel device driver and Touch panel controller by the following steps.

1. Press System Button on the front panel.
2. Press Firmware Revision
3. Press More Info



When the FW A.02.04 or later is installed, the FW detects the combination failure and shows the following error message.

Error Message	Possible root cause
Hardware error. Valid touch panel controller not found	SR-10 driver is in the HDD, but SR-10 HW is not in the E5061B
	DR-12 driver is in the HDD, but DR-12 HW is not in the E5061B

Note: This combination failure detection is not available on FW A.02.03 or below.

5012-8672, DR-12 Touch Screen Controller board needs DR-12 driver on the HDD. The DR-12 driver is in the E5061-82201 HDD only.

0960-2972, SR-10 Touch Panel Controller needs SR-10 driver on the HDD. The SR-10 driver is in the E5061-82202 HDD only.

Shipping Combination			Judgment
Touch Screen Board Agilent PN(Manufacturer PN)	HDD Volume Label(s)	Touch Screen Driver	
0960-2804 (DR-12)	EL100/EL110/EL112/EL114/ EL201/EL202/EL203	DR-12 driver	Valid
5012-8672 (DR-12)	KY203	DR-12 driver	Valid
0960-2972 (SR-10)	KY204 or later	SR-10 driver	Valid

Solution/Action:

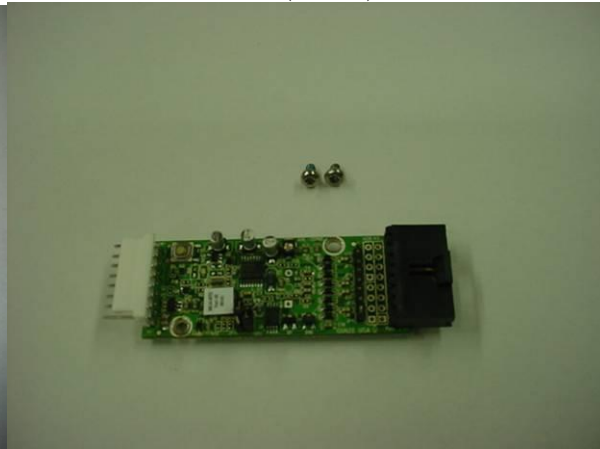
Serial-Number Range	Combination of Touch Panel Controller and HDD Volume Label when the instrument was shipped	Case1: Touch Panel Controller is defective		Case2: HDD is defective	
		Replacement items	Warranty Charge	Replacement items	Warranty Charge
MY49100001 to MY49199999, SG49100001 to SG49199999	5012-8672(DR-12) & EL100/EL110/EL112/EL114/EL201/EL202/EL203	Replace with new 5012-8672	No	Replace with new E5061-82201	No
	5012-8672(DR-12) & KY203	Replace with new 5012-8672	No	Replace with new E5061-82202, E5061-65001 & 0960-2972	No(E5061-82202) Yes(E5061-65001) Yes(0960-2972)
MY49201816 or later SG49200010 or later	0960-2972(SR-10) & KY204 or later	Replace with new 0960-2972	No	Replace with E5061-82202	No

Note: For all the serial number range, FW can be updated to FW.A.02.04 or later.

5012-8672 (DR-12) Picture



0960-2972 (SR-10) Picture



The contents of E5061-65001

Item Number	Description	Qty
E5061-00611	Cover Shield, Front Assembly	1
E5061-61627	Wire Assembly	1
0515-0430	Screw-Machine M3	6
0515-1382	Screw-Machine M3.5	7
1400-0249	Cable-Tie	2
1400-1334	Clamp-Cable Steel	1
1400-1391	Clamp-Cable Steel	1
1400-3156	Clamp-Cable Nylon	2

1400-3337	Clamp-Cable	1
E5061-61651	Wire Assembly	1
E5061-61652	Bulkhead USB Cable Assembly	1
1400-3415	Wire Clamp	1
0363-0170	RFI Gasket	0.5

The steps to replace from 5012-8672 to 0960-2972 are as follows.

Step-1: Replace E5061-61617 with E5061-61627.

Connect the both end connectors of the wire assembly part properly.



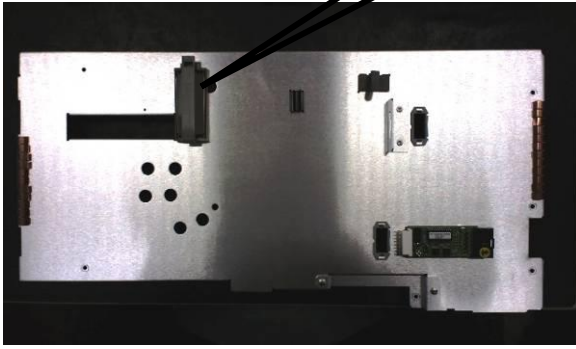
Step-2: Paste a cable clamp 1400-1334 to the proper location as the picture.



Step-3: Replace E5061-00601 with E5061-00611.

Paste the cable clamp parts (1400-3156, 1400-1391 and 1400-3337) to the individual proper location on the back cover as the picture.

1400-3415

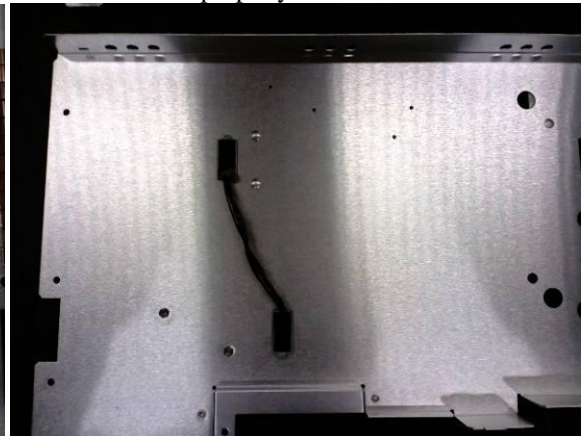
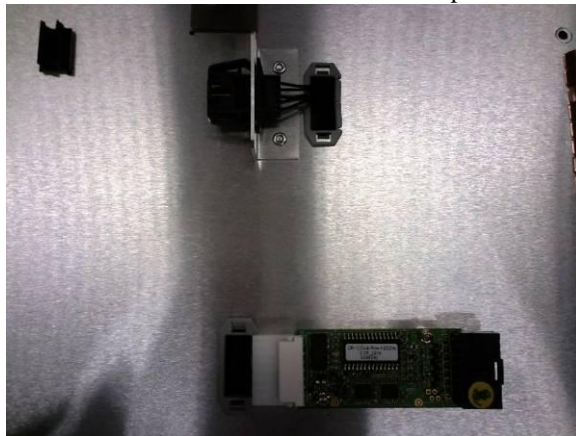


Step-4: Pass the white connector of the cable through the new hole then return it through the current hole from behind.



E5061-61651

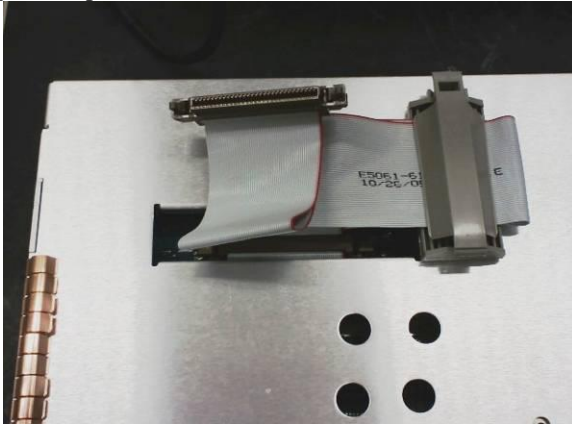
Step-5: Insert another connector to the bracket next to the new hole.
Connect the white connector to the touch panel module controller board properly.



Step-6: Put the back cover on the front assembly module then fix with 6pcs of screw 0515-0430.
Then, connect the cable from the touch panel module to the controller board.



Step-7: Connect the cable E5061-61631(which is re-used item from the original instrument) and make a shape correctly as the picture.



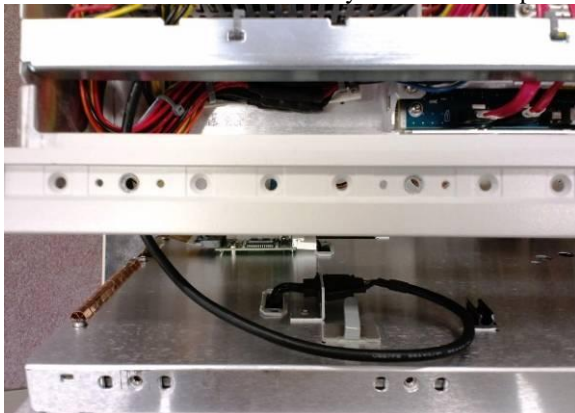
Step-8: Connect the cable to J18 port on the CPU board, then paste a cable clamp on the sidewall of the PSU as the picture.

Then, clamp the cable properly and run through under the bar properly then tie the cable with other cables together with a cable tie 1400-0249.

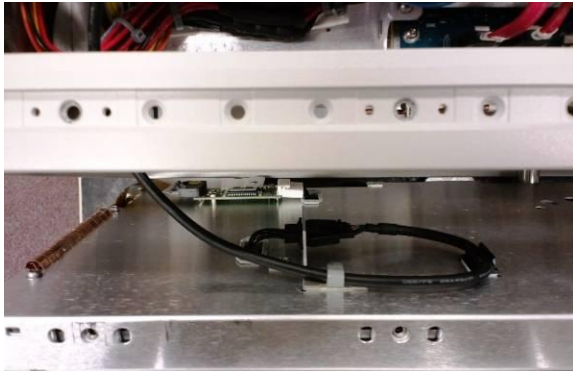


E5061-61652

Step-9: Put the front assembly module in front of the chassis as the picture, then connect another USB connector of the cable to the front assembly module as the picture.



Step-10: Clamp the cable as the picture.

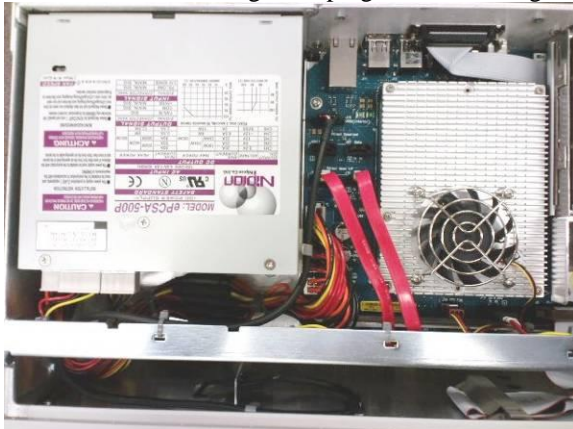


Step-11: Install the front assembly module to the chassis completely, then check cable caught between the front assembly module and the chassis visually.

Next, fix the installed front assembly module with 7pcs of screw, 0515-1382.



Step-12: Check the cable routing, clamping and connecting condition properly.



- End of Document -