

E3939A/B-02-S

S E R V I C E N O T E

SUPERSEDES: None

HP E3939A/B PT500 Protocol Tester

Serial Numbers: CA32220000 / CA33300023

Duplicate Service Notes:

E3910A/B-02-S
E4093A/B-02-S
E4095A/B-02-S
E4100B-02-S
IDAC-MPT-02-S
IDAC-M-XPE-02-S

WARNING

Possible Shock Hazard

High voltage applied to the connector module plane or connector module handle could cause the existing ground path to open, resulting in a possible shock hazard to the user.

To Be Performed By: HP-Qualified Personnel

Parts Required: 5063-3516 Grounding Kit

Continued

DATE: 03 January 1994

ADMINISTRATIVE INFORMATION

SERVICE NOTE CLASSIFICATION:			
PRIORITY SAFETY			
ACTION CATEGORY:	IMMEDIATELY	STANDARDS:	LABOR 2.5 Hours
LOCATION CATEGORY:	<input type="checkbox"/> ON-SITE <input checked="" type="checkbox"/> HP LOCATION	SERVICE INVENTORY:	<input type="checkbox"/> RETURN <input type="checkbox"/> SCRAP <input checked="" type="checkbox"/> SEE TEXT
AVAILABILITY:	ALWAYS	USED PARTS:	<input type="checkbox"/> RETURN <input type="checkbox"/> SCRAP <input checked="" type="checkbox"/> SEE TEXT
AUTHOR: HS	ENTITY: Z600	RESPONSIBLE ENTITY: Z600	UNTIL: ALWAYS
ADDITIONAL INFORMATION: No inventory or used parts applicable. Functional testing of instrument after reassembly is included in labor standard (1.5 hour).			

© 1994 HEWLETT-PACKARD COMPANY
PRINTED IN U.S.A.



Kit contains:

HP Part No.	Description	Qty.
5063-3509	8 cm 16 ga. ground cable	1
5063-3518	11 cm 16 ga. ground cable	1
5063-3510	8 cm 22 ga. connector module ground cable	2
4030-0414	M4x5 screws	2
4030-0431	M4x28 screws	4
4030-0400	M4x25 screw	3

Situation:

A situation exists in which a unit in the referenced serial number range could possibly become a shock hazard to personnel. This situation would likely only occur if high voltage is present on the connector module plane or connector module handle and the existing ground path was blown away. The existing ground path is insufficient to carry current specified by Hewlett-Packard safety requirements. This situation has occurred to date only when checking the unit with a megger or similar device.

Solution/Action:

Affected units must be retrofitted with grounding wires to rectify the problem, using the following instructions.

1) Interface Connector Module to Chassis Grounding

- Remove top cover of instrument and interface module.
- Install longer (11 cm) ground cable, p/n 5063-3518, to existing screw of upper left hand side member bracket hole.
- Connect to inside connector module hole, beside degaussing board, with 4x5 screw.

2) Auxilliary Connector Module to Chassis Grounding

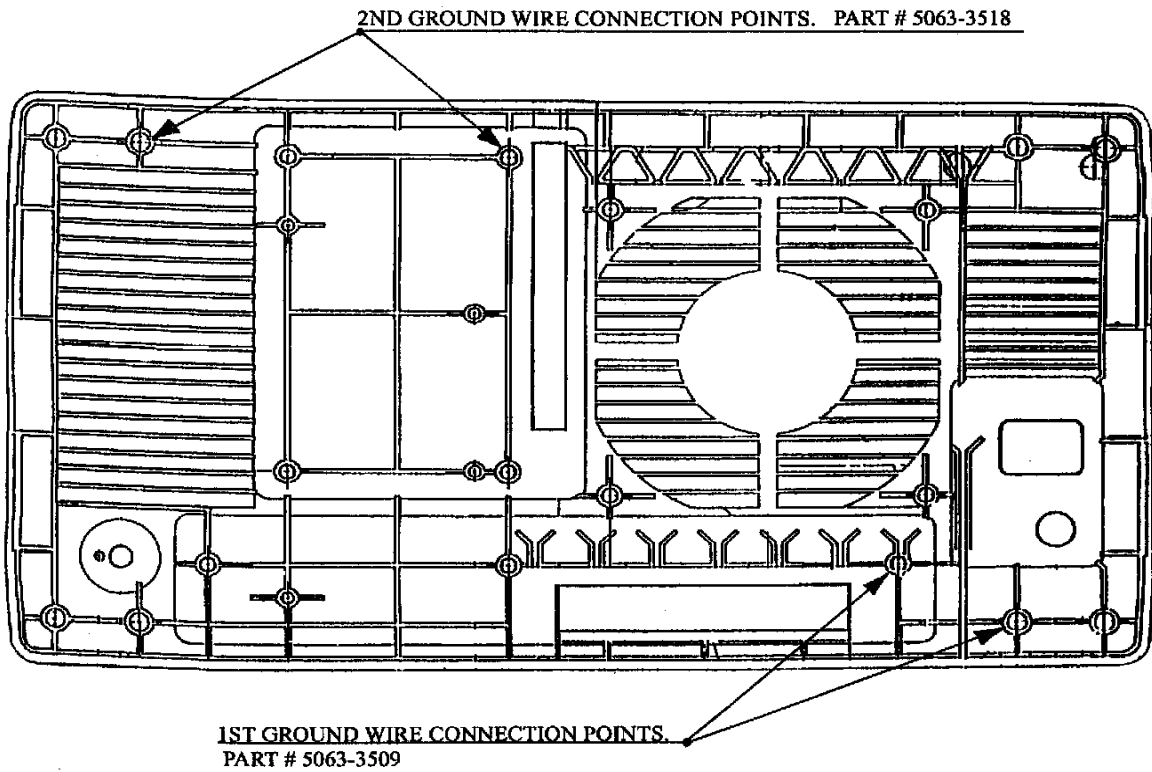
- Remove bottom cover of instrument and auxilliary connector module.
- Install 8 cm ground cable, p/n 5063-3509, to right hand side hole of auxilliary connector with 4x5 screw.

3) Interface Connector Module Handle

- Connector module handle should be grounded from the rear handle screw to the nearest DB style connector screw by installing one of the 5063-3510 wires between these two points.
- Use the four 4x28 screws to reinstall connector module.

4) Auxilliary Connector Module Handle

- Applies only to MPT368.2, IPT468, XPE systems with no parallel printer connector, that is, with auxilliary connector module 4010-0070-IDA.
- Install grounding wire between the handle mounting screw and the nearest screw of the "PRINTER" connector.
- Reinstall auxilliary connector module using three 4x25 screws.



PT BACK BEZEL GROUNDING WIRES UPGRADE