

MODIFICATION RECOMMENDED –
CORRECTS MANUFACTURING OR DESIGN DEFECTS

4338B-01

S E R V I C E N O T E

Supersedes:
NONE

4338B Milliohmmeter

Serial Numbers: MY41100538 / MY41100609

Incorrect characters might be displayed on rare occasions

To Be Performed By: Agilent-Qualified Personnel

Parts Required:

P/N	Description	Qty.
04263-61011	LCD ASSY	1

ADMINISTRATIVE INFORMATION

SERVICE NOTE CLASSIFICATION:			
MODIFICATION RECOMMENDED			
ACTION CATEGORY:	<input type="checkbox"/> IMMEDIATELY <input checked="" type="checkbox"/> ON SPECIFIED FAILURE <input type="checkbox"/> AGREEABLE TIME	STANDARDS: LABOR: 0.2 Hours	
LOCATION CATEGORY:	<input type="checkbox"/> CUSTOMER INSTALLABLE <input type="checkbox"/> ON-SITE <input checked="" type="checkbox"/> SERVICE CENTER	SERVICE INVENTORY: <input type="checkbox"/> RETURN <input checked="" type="checkbox"/> SCRAP <input type="checkbox"/> SEE TEXT	USED PARTS: <input type="checkbox"/> RETURN <input checked="" type="checkbox"/> SCRAP <input type="checkbox"/> SEE TEXT
AVAILABILITY:	PRODUCT'S SUPPORT LIFE	AGILENT RESPONSIBLE UNTIL: Sep 2006	
AUTHOR: KW PRODUCT LINE: WN			
ADDITIONAL INFORMATION:			

© AGILENT TECHNOLOGIES, INC. 2004
PRINTED IN U.S.A.

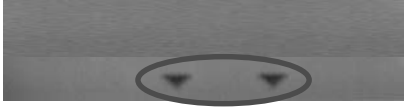


September 29, 2004

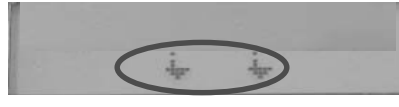
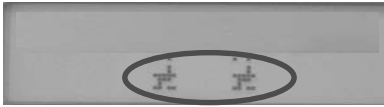
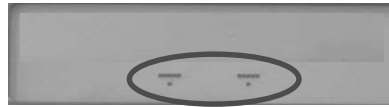
Situation:

Some of the meters specified above may have a defective LCD assembly. When the meter is turned on, incorrect characters might be displayed on rare occasions due to its LCD assembly failure. Once the incorrect characters are displayed, they remain on the screen until the meter is turned off. The figures below show examples of the incorrect characters.

Correct



Incorrect



* Annunciators are displayed incorrectly.

Solution/Action:

Replace the LCD assembly with a new one.